

Enhanced occupational therapy for children & adolescents with brain tumours within two years of diagnosis

Tony Long & Eddy Estlin
CYP@Salford

School of Nursing, Midwifery & Social Work
University of Salford

Treatment

1

- Surgery

2

- Radiotherapy

3

- Chemotherapy

Late effects of brain tumours and their treatment

Education

Employment

Health-related quality of life

Health status

Psychological functioning

Self esteem



High grade brain stem glioma

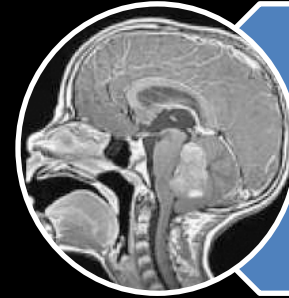
**Research programme
focused on improving
QoL outcomes after
CNS tumour**

Psychological support at
school

Improved MDT response

Enhanced self-esteem

New OT service



Comparison of
patients' accounts of
QOL with their medical
records after
medulloblastoma



Self-esteem in
children & young
people with CNS
tumours



OT interventions for
children with CNS
tumours

Enhanced occupational therapy for children & adolescents with brain tumours within 2 years of diagnosis

Will a dedicated occupational therapy
service increase general activity, school
attendance, and quality of life?

The journey to RfPB success

RDS

2005 - Initial concept

2006 - Main study devised

2009 - Application to SDBTT

2010 - **1st RfPB application** (Comp14)

- Rejected at 1st stage

2011 - **Submitted in May** (Comp15)

July - Prelim scrutiny but issues

Dec - Conditional award (issues)

2012 - Conditions met (April)

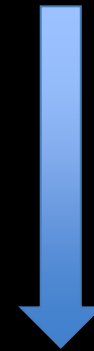
01/11 Workshops

04/11 Adviser

07/11 Adviser

04/12 Adviser

(+ lots more emails)



The journey ... continues

April 2012 - Budgetary review
- completed 1 Aug 2012

Aug 2012 - Precontracting issues

Jan 2013 - Contract awarded
- ...nearly

April 2013 - Contracts signed
- Start 1 May 2013

Concept 2005 → Apply May 2011 → Start May 2013



Where to next?

Do the study

...Change of CI

...Partner withdrew

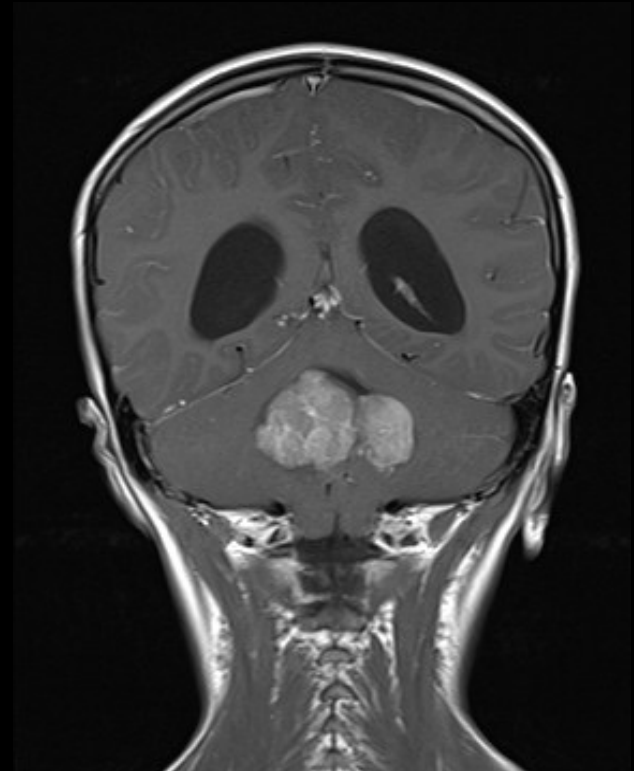
Apply for the main study

...5 centres

...Intervention study

...Funding from RfPB

...with a lot of RDS support



Improving quality of life outcomes for children with brain tumours

Tony Long

Professor of Child & Family Health
t.long@salford.ac.uk

